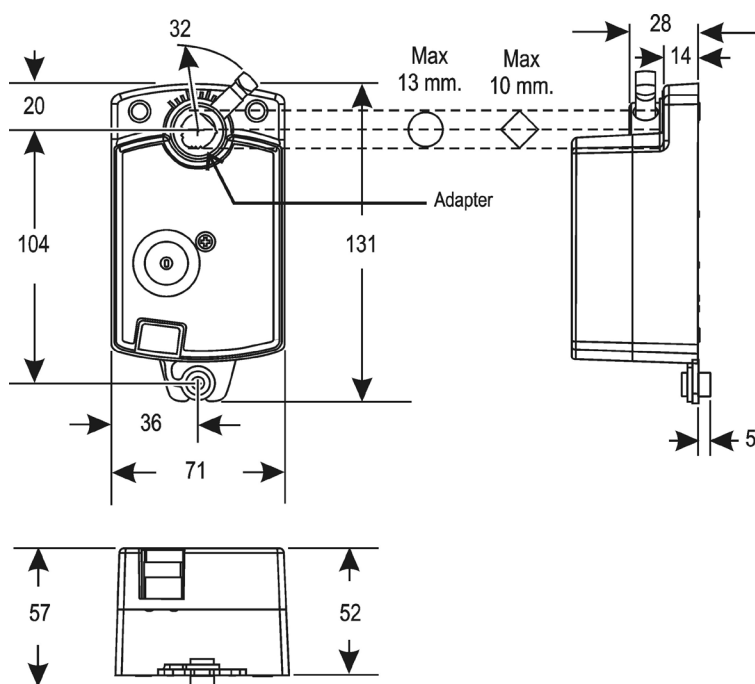


**DAB1.4/ DAB1/ DAD1/ DAD2**  
Electric Non-Spring Return Actuators**Application**

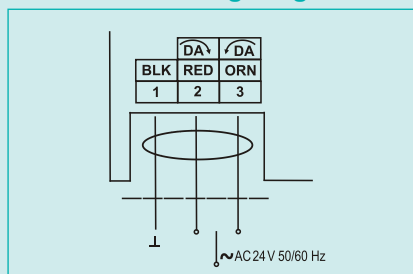
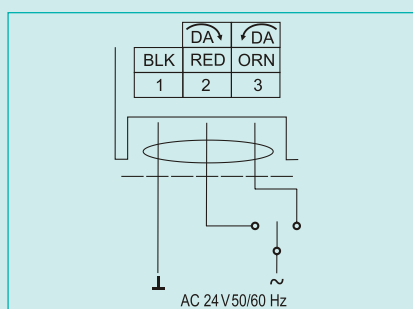
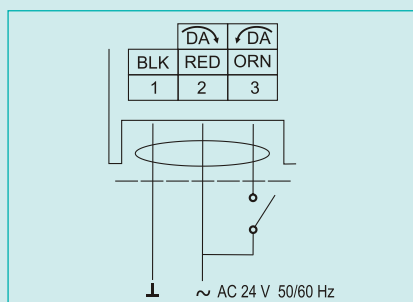
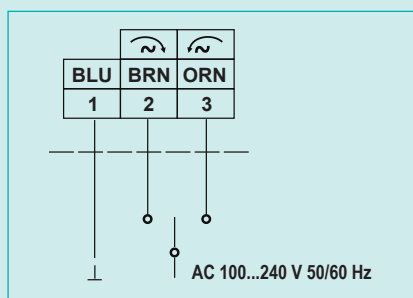
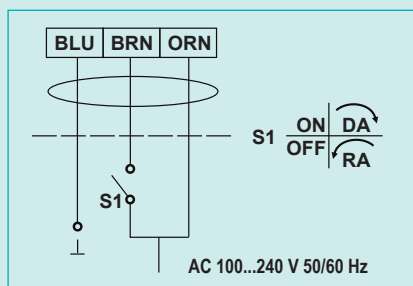
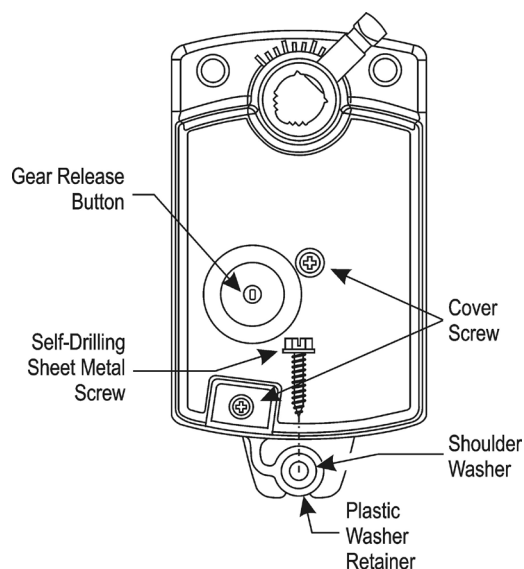
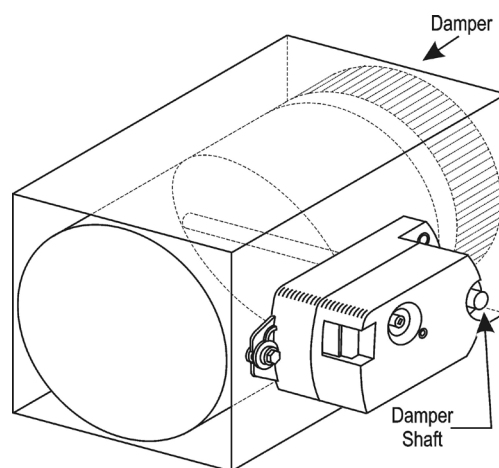
The JOVENTA electric damper actuator series have been developed to operate small and medium air damper in ventilation and air conditioning systems. The compact design make this JOVENTA actuator highly versatile.

**Features**

- Floating and ON/OFF control
- Load-independent running time
- Up to 5 actuators in parallel operation possible
- Simple direct-mounting with universal adapter for fitting to 8...13 mm Ø round axis or with 8...10 mm square shaft
- Manual release button
- Devices meet CE requirements



Dimensions in mm

**DAB1.4/ DAB1/ DAD1/ DAD2**  
Electric Non-Spring Return Actuators**Control Wiring Diagrams****DAB1.4 / DAD1.4****DAB1 / DAD1 Floating****DAB1 / DAD1 - ON/OFF****DAD2 - Floating****DAD2 - ON/OFF****Positioning the Actuator****Inserting the Screw into the Shoulder Washer**

DAB1.4/ DAB1/ DAD1/ DAD2  
Electric Non-Spring Return Actuators

## Ordering Codes

Codes	Descriptions
DAB1.4	2 Nm, AC 24 V with 1,2 PVC cable, Floating without Timeout
DAB1	2 Nm, AC 24 V with 1,2 PVC cable, ON/OFF and Floating with Timeout
DAD1	4 Nm, AC 24 V with 1,2 PVC cable, ON/OFF and Floating with Timeout
DAD2	4 Nm, AC 100+240V with 1.2 PVC cable - ON/OFF and Floating with Timeout

## Technical Specifications

## DAB1.4 / DAB1 / DAD1 / DAD2

Product Codes	DAB1.4	DAB1	DAD1	DAD2
Power Requirements	AC 24 V +25% / -20% at 50/60 Hz			AC 100 to 240V -15%/+10% at 50/60 Hz
	2.1 VA	2.5 VA	3.0 VA	7.5 VA Supply and 0.07 A
Control Type	Floating Control without Timeout	ON/OFF and Floating Control With Timeout		
Input Signal	AC 24 V +25% / -20% at 50/60 Hz, SELV or Class II			AC 100 to 240V -15%/+10% at 50/60 Hz Class II
Feedback Signal	---			
Motor Input Impedance	200 ohms Nominal			
Running Torque	2 Nm	2 Nm	4 Nm	
Travel Time (for 90° of Rotation)	30 Seconds at 60 Hz 36 Seconds at 50 Hz	30 Seconds at 60 Hz 36 Seconds at 50 Hz	60 Seconds at 60 Hz 72 Seconds at 50 Hz	
Rotation Range	93° ±3°, CW or CCW			
Cycles	100,000 Full Stroke Cycles; 2,500,000 Repositions at Rated Running Torque			
Audible Noise Rating	35 dBA Nominal at 1 m			
Electrical Connections	1.2 m Polyvinyl Chloride (PVC) cable with 0.75 mm <sup>2</sup> conductors and 6 mm ferrule ends			
Mechanical Connections	Up to 13 mm Diameter Round Damper Shafts, or 10 mm Square Damper Shafts			
Enclosure	IP 42			
Ambient Conditions				
- Operating	-20 to 60 °C; 90% RH Maximum, Noncondensing			
- Storage	-40 to 85 °C; 90% RH Maximum, Noncondensing			
Shipping Weight	0.5 Kg			
CE Compliance	Johnson Controls, declares that these products are in compliance with the essential requirements and other relevant provisions of the EMC Directive and Low Voltage Directive			

\*Caution: Please note damper manufacturer's information concerning the open/close torque.

## Building Efficiency

Headquarters: Milwaukee, Wisconsin, USA  
Branch Offices: Principal Cities World-wide

Johnson Controls® and Joventa® are registered trademarks of Johnson Controls.

All other marks herein are the marks of their respective owners.

© Copyright 2020 Johnson Controls. All rights reserved. Any unauthorized use or copying is strictly prohibited.