

Sensor technologies ▶ Proximity sensors

Sensor, Series SN2

▶ with cable ▶ without wire end ferrule, tin-plated, 2-pin, without wire end ferrule, tin-plated, 3-pin



00105970_2

Ambient temperature min./max.
Protection class
Switching point precision [mm]

See table below
IP67
±0,1

Technical Remarks

- If reed sensors are used, we recommend using a short-circuit protective device (SCPD).

	Type of contact	Cable sheath	Cable length	Operational voltage AC min./max.	Voltage drop U at I _{max}	DC switching current, max.	AC switching current, max.	Part No.
			[m]	[V AC]		[A]	[A]	
	Reed	Polyvinyl chloride	3	0 / 240	Rs*I _{max} .	0.13	0.13	0830100315
		Polyvinyl chloride	3	12 / 240	2,1 V + I*Rs	0.13	0.13	0830100365
		Polyvinyl chloride	3	12 / 240	2,1 V + I*Rs	0.3	0.5	0830100368
		Polyurethane	3	12 / 240	2,1 V + I*Rs	0.3	0.5	0830100370
		-	3	0 / 240	Rs*I _{max} .	0.13	-	0830100316
		-	3	0 / 240	Rs*I _{max} .	0.13	-	0830100373
		Polyurethane	3	12 / 240	2,1 V + I*Rs	0.13	0.13	0830100367
		Thermoplastic elastomer	3	12 / 240	2,1 V + I*Rs	0.12	0.12	0830100317
		Polyvinyl chloride	5	12 / 240	2,1 V + I*Rs	0.13	0.13	0830100366
		Polyvinyl chloride	5	12 / 240	2,1 V + I*Rs	0.3	0.5	0830100369
		Polyvinyl chloride	7	12 / 240	2,1 V + I*Rs	0.3	0.5	0830100327
		Polyvinyl chloride	10	12 / 240	2,1 V + I*Rs	0.13	0.13	0830100325
		Thermoplastic elastomer	11	12 / 240	2,1 V + I*Rs	0.12	0.12	0830100326
		Polyvinyl chloride	20	12 / 240	2,1 V + I*Rs	0.13	0.13	R412004848
	Reed	Polyvinyl chloride	3	12 / 42	I*Rs	0.13	0.13	0830100371
		Polyvinyl chloride	5	12 / 42	I*Rs	0.13	0.13	0830100372
	electronic PNP	Polyvinyl chloride	3	10 / 30	≤ 2,0 V	0.13		0830100375
		Thermoplastic elastomer	3		2,1 V + I*Rs	0.12		0830100378
		Polyurethane	3		≤ 2,0 V	0.13		0830100377
		Polyvinyl chloride	5		≤ 2,0 V	0.13		0830100376

Sensor, Series SN2

▶ with cable ▶ without wire end ferrule, tin-plated, 2-pin, without wire end ferrule, tin-plated, 3-pin

Part No.	Ambient temperature min./max. [°C]	Switching capacity	Protective resistor for reed	Vibration resistance	Shock resistance Max.	Max. switching frequency kHz	Operating current, not switched
0830100315	-20°C / +80°C		27	-	-	< 0,3	
0830100365	-20°C / +80°C		27	30 g (50 - 1000 Hz)	50 g / 11 ms	-	
0830100368	-20°C / +80°C		1,3	30 g (50 - 1000 Hz)	50 g / 11 ms	-	
0830100370	-20°C / +80°C		1,3	30 g (50 - 1000 Hz)	50 g / 11 ms	-	
0830100316	-20°C / +80°C		1,3	-	-	< 0,3	
0830100373	-20°C / +80°C		100	-	-	< 0,3	
0830100367	-20°C / +80°C		27	30 g (50 - 1000 Hz)	50 g / 11 ms	-	
0830100317	-20°C / +120°C	10 W / 10 VA	27	30 g (50 - 1000 Hz)	100 g / 11 ms	-	-
0830100366	-20°C / +80°C		27	30 g (50 - 1000 Hz)	50 g / 11 ms	-	
0830100369	-20°C / +80°C		1,3	30 g (50 - 1000 Hz)	50 g / 11 ms	-	
0830100327	-20°C / +80°C		1,3	30 g (50 - 1000 Hz)	50 g / 11 ms	-	
0830100325	-20°C / +80°C		27	30 g (50 - 1000 Hz)	50 g / 11 ms	-	
0830100326	-20°C / +120°C		27	30 g (50 - 1000 Hz)	100 g / 11 ms	-	
R412004848	-20°C / +80°C		27	30 g (50 - 1000 Hz)	50 g / 11 ms	-	
0830100371 0830100372	-20°C / +80°C	5,5 W / 5,5 VA	27	30 g (50 - 1000 Hz)	100 g / 11 ms	-	-
0830100375	-10°C / +70°C	-	-	-	-	< 2,0	< 10 mA
0830100378	-20°C / +120°C	10 W / 10 VA	27	30 g (50 - 1000 Hz)	100 g / 11 ms	-	-
0830100377	-10°C / +70°C	-	-	-	-	< 2,0	< 10 mA
0830100376	-10°C / +70°C	-	-	-	-	< 2,0	< 10 mA

Part No.	Operating current, switched	LED	Note
0830100315		-	1); 3); 5)
0830100365		Yellow	1); 3); 5)
0830100368		Yellow	1); 3); 5)
0830100370		Yellow	1); 3); 5)
0830100316		-	1); 3); 5)
0830100373		-	1); 3); 5)
0830100367		Yellow	1); 3); 5)
0830100317		-	1); 3); 5)
0830100366		Yellow	1); 3); 5)
0830100369		Yellow	1); 3); 5)
0830100327		Yellow	1); 3); 5)
0830100325		Yellow	1); 3); 5)
0830100326		-	1); 3); 5)
R412004848		Yellow	1); 4); 5)
0830100371 0830100372		Yellow	1); 3); 5)

- 1) interfaces: without wire end ferrule, tin-plated; 2-pin
- 2) interfaces: without wire end ferrule, tin-plated; 3-pin
- 3) Material Housing: Polyamide
- 4) Material Housing: epoxy resin
- 5) Protected against polarity reversal
- 6) short circuit resistant / Protected against polarity reversal

Sensor technologies ▶ Proximity sensors

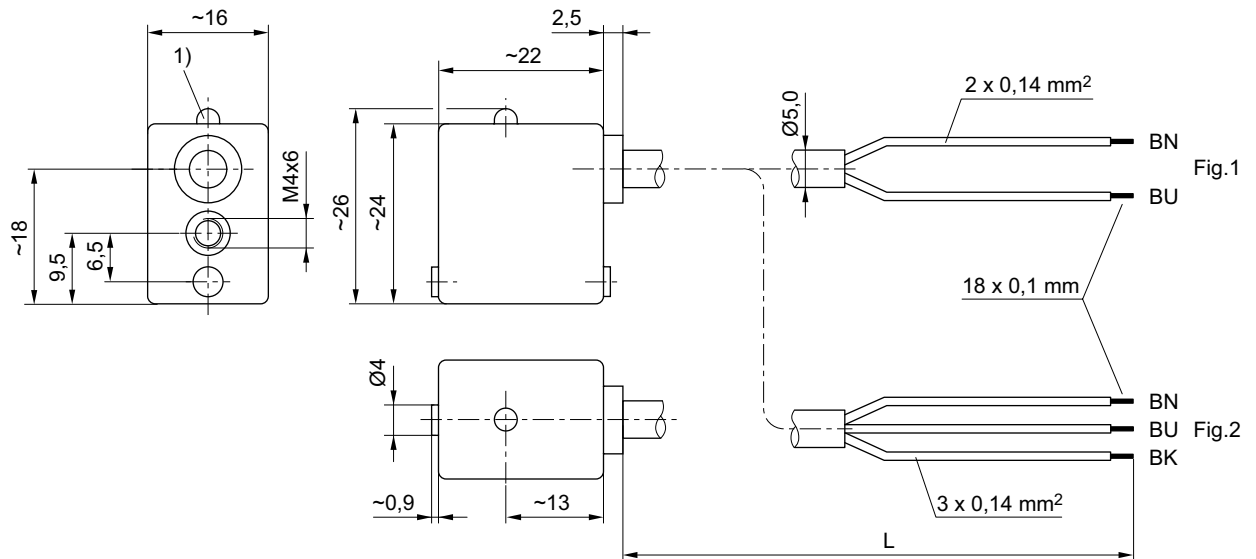
Sensor, Series SN2

▶ with cable ▶ without wire end ferrule, tin-plated, 2-pin, without wire end ferrule, tin-plated, 3-pin

Part No.	Operating current, switched	LED	Note
0830100375	< 15 mA	Yellow	2); 3); 6)
0830100378	-	-	2); 3); 5)
0830100377	< 15 mA	Yellow	2); 3); 6)
0830100376	< 15 mA	Yellow	2); 3); 6)

- 1) interfaces: without wire end ferrule, tin-plated; 2-pin
- 2) interfaces: without wire end ferrule, tin-plated; 3-pin
- 3) Material Housing: Polyamide
- 4) Material Housing: epoxy resin
- 5) Protected against polarity reversal
- 6) short circuit resistant / Protected against polarity reversal

Dimensions



- 1) LED
- L = cable length
- BN = brown, BK = black, BU = blue

00111946_a