

Inductive proximity switches are contact-free sensors. They detect all conductive metals, regardless of whether they move or not. The achievable sensing range of the devices depends on the object material and its dimensions. The vibration-resistant sensors can be approached laterally or frontally. Inductive proximity switches are used for presence detection (e.g. goods carriers), positioning (e.g. dampers), counting (e.g. nuts /bolts), speed detection (e.g. for cog wheels), on conveyor systems (e.g. hose feedings) or distance measurements (e.g. press-in checking) of metallic objects.


**TECHNICAL DATA**

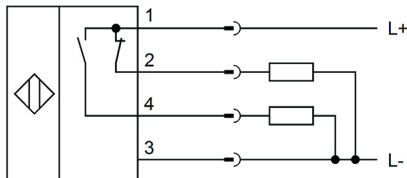
Devices for hose mounting	NO
Feeding technology	NO
Harsh environmental conditions	NO
Hygienic and wet area	NO
Metallic sensor surface	NO
Oil and cooling lubricants	NO
Ring-shaped sensors	NO
Welding-proof sensors	NO
Active area material of sensor	PBTP
Ambient temperature (min/max)	-25 °C / 85 °C
Ambient temperatures < -25°C	NO
Atmospheric-change resistant (temperature cycle)	NO
Degree of protection (IP)	IP67
High-pressure-proof sensors	NO
Housing design	Cuboid
Housing material	PBTP
Housing material	Plastic
Increased ambient temperatures > 80°C	YES
Material independent sensors (factor 1)	NO
Mechanical mounting condition for sensor	Concise
Pressure-proof	NO
Sensor height	40 mm
Sensor length	62 mm
Sensor width	40 mm
Teflon housing	NO
2x increased switching distance	YES
3x increased switching distance	NO
4x increased switching distance	NO
Cascadable	NO
Connection to amplifier	NO
Distance measuring sensors	NO

inductive sensors (cuboid)

**TECHNICAL DATA**

Hysteresis	15 %
Increased switching distance	NO
Max. output current	200 mA
No-load current	30 mA
Norm measuring plate	60x60x1
Rated control supply voltage $U_s$ at DC (min/max)	15 V / 34 V
Relative repeat accuracy	3.75 %
Reverse polarity protection	YES
Short-circuit-proof	YES
Suitable for safety functions	NO
Switching distance	20 mm
Switching frequency	30 Hz
Type of electrical connection	Connector M12
Type of switching function	Anticoincidence
Type of switching output	PNP
Voltage drop	2.5 V
Voltage type	DC
With LED display	NO
With monitoring function of downstream devices	NO
Areas inquiry	NO
End position sensing, hydraulic cylinder	NO
Welding area	NO

**CONNECTION**



**Colors:** 1 = BN (brown), 2 = WH (white), 3 = BU (blue), 4 = BK (black)

**Functions:** 1 = L+, 2 = PNP NC, 3 = L-, 4 = PNP NO

**DIMENSIONAL DRAWING**

