

Capacitive proximity switches are contact-free sensors. They detect metallic and non-metallic objects, regardless of whether they move or not. The achievable sensing range of the devices depends on the object material, its dimensions and the response sensitivity, which is set via a potentiometer. The vibration-resistant sensors can be approached laterally or frontally. Capacitive proximity switches are used for presence detection (e.g. sealing detection), positioning (e.g. PET bottles), counting (e.g. plastic caps), level detection (e.g. lubricant) or distance measurements (e.g. thickness measurement) of solid and liquid materials.

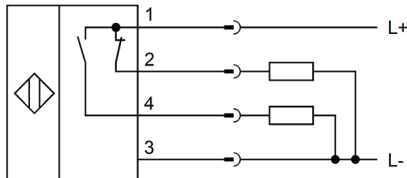

TECHNICAL DATA

Active area material of sensor	PTFE
Ambient temperature (min/max)	-25 °C / 70 °C
Ambient temperatures < -25°C	NO
Degree of protection (IP)	IP67
Devices for hose / pipe mounting	NO
Housing coating	Nickel-plated
Housing design	Cylinder, screw-thread
Housing material	Brass
Increased ambient temperatures > 80°C	NO
Mechanical mounting condition for sensor	Not flat
Pressure-proof	NO
Sensor length	60 mm
Teflon housing	NO
Thread length	44 mm
Thread pitch	1 mm
Thread size, metric	18
Auto-adaptive	NO
Cascadable	NO
Correction factor (PVC)	0.5
Correction factor (glass)	0.6
Correction factor (oil)	0.5
Correction factor (wood)	0.6
Distance measuring sensors	NO
Hysteresis	15 %
Max. output current	250 mA
No-load current	15 mA
Number of pins	4
Number of switching outputs	2
Protected against electrostatic charge	NO
Rated control supply voltage U_s at DC (min/max)	10 V / 35 V
Reverse polarity protection	YES

TECHNICAL DATA

Setting procedure	Manual adjustment
Short-circuit-proof	YES
Suitable for safety functions	NO
Supply voltage (min/max)	10 V / 35 V
Switching distance	8 mm
Switching distance (min/max)	0.5 mm / 15 mm
Switching frequency	50 Hz
Type of electrical connection	Connector M12
Type of switching function	Anticoincidence
Type of switching output	PNP
Voltage drop	2 V
Voltage type	DC
With LED display	YES
With monitoring function of downstream devices	NO
Ceramic sensor surface	NO
Detection of labels	NO
Level detection	YES
Level detection of sand container for railed vehicles	NO
Level detection of synthetic granules for injection molding machines	NO

CONNECTION



Colors: 1 = BN (brown), 2 = WH (white), 3 = BU (blue), 4 = BK (black)

Functions: 1 = L+, 2 = pnp/nc, 3 = L-, 4 = pnp no

DIMENSIONAL DRAWING

