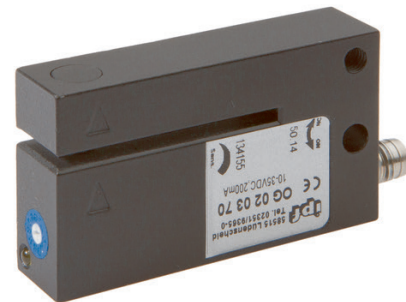


Special design of through-beam sensor. Transmitter and receiver are located in the fork or angular limbs and are perfectly aligned to each other.



TECHNICAL DATA

Feeding technology	NO
Ambient temperature (min/max)	-10 °C / 60 °C
Degree of protection (IP)	IP67
Diameter detection	NO
Fork depth	40 mm
Fork light barrier design	Furcate
Fork width	2 mm
Heavy soiling	NO
Housing design	Cuboid
Housing material	Zinc die-cast
Housing material	Metal
Material of optical surface	Plastic
Punching tools	NO
Reflector included in the scope of delivery	NO
Sensor height	34.5 mm
Sensor length	14 mm
Sensor width	60 mm
Transparent material detection	NO
Analogue output -10 V ... +10 V	NO
Analogue output 0 V ... 10 V	NO
Analogue output 0 mA ... 20 mA	NO
Analogue output 4 mA ... 20 mA	NO
Connection to amplifier	NO
Decay time	0.05 ms
Dynamic switching output	NO
Equipment protection class	Safety class 3
Hysteresis	0.1 mm
Max. output current	200 mA
Max. switching distance	2 mm
Measurement of light beam coverage	NO
No-load current	30 mA

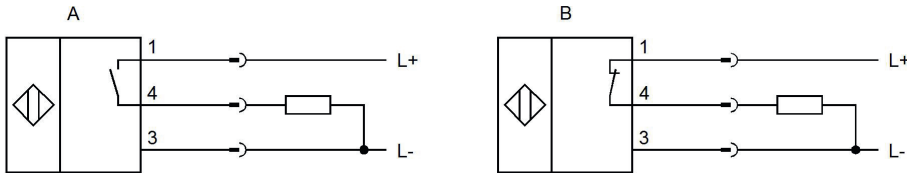
TECHNICAL DATA

Number of pins	3
Operating voltage (min/max)	10 V / 35 V
Pre-failure message	NO
Rated control supply voltage U_s at DC (min/max)	10 V / 35 V
Relative repeat accuracy	0.05 mm
Repeatability +/-	50 μ m
Response time	0.05 ms
Reverse polarity protection	YES
Scanning function	Light-/dark switching
Setting procedure	Manual adjustment
Short-circuit-proof	YES
Suitable for safety functions	NO
Switching frequency	10000 Hz
Type of electrical connection	M8-connector
Type of electrical connection	Connector M8
Type of switching function	Normally closed contact/normally open contact
Type of switching function	Programmable/configurable
Type of switching output	PNP
Type of the forked light barrier	Standard
Voltage drop	2.8 V
Voltage type	DC
With communication interface, AS-Interface	NO
With communication interface, CANOpen	NO
With communication interface, DeviceNet	NO
With communication interface, Ethernet	NO
With communication interface, INTERBUS	NO
With communication interface, PROFIBUS	NO
With communication interface, RS-232	NO
With communication interface, RS-422	NO
With communication interface, RS-485	NO
With communication interface, SSD	NO
With communication interface, SSI	NO
With communication interface, analog	NO
With monitoring function of downstream devices	NO
With other analog output	NO
With restart lock	NO
With time function	NO
Edge control	NO
Adjustable opening width	NO
Laser protection class	None
Light beam form	Point
Light source	Infrared light clocked
Light source	Infrared light
Min. object size	0.4 mm
Resolution	500 μ m

TECHNICAL DATA

Wavelength of the sensor 880 nm

CONNECTION



Colors: A: 1 = BN (brown), 3 = BU (blue), 4 = BK (black)

B: 1 = BN (brown), 3 = BU (blue), 4 = BK (black)

Functions: A: 1 = L+, 3 = L-, 4 = PNP NO

B: 1 = L+, 3 = L-, 4 = PNP NC

DIMENSIONAL DRAWING

