

Optical sensors function contactlessly. They detect objects independent of their characteristics (e.g., shape, color, surface structure, material). The basic operating principle is based on the transmission and reception of light. There are three different versions: 1. The through-beam sensor consists of two separate devices, a transmitter and a receiver that are aligned with one another. If the light beam between the two devices is interrupted, the switching output integrated in the receiver changes its status. 2. With the retro-reflective sensor, the transmitter and receiver are located in one device. The emitted light beam is reflected back to the receiver by a reflector that is to be mounted opposite the device. As soon as the light beam is interrupted, the switching output integrated in the device changes its status. 3. With the diffuse reflection sensor, the transmitter and receiver are in one device. The emitted light beam is reflected by the object that is to be detected. As soon as the receiver detects the reflected light, the switching output integrated in the device changes its status.


**TECHNICAL DATA**

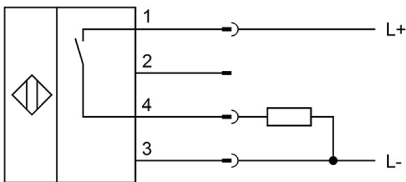
Feeding technology	YES
Ring-shaped sensors	NO
Ambient temperature (min/max)	-25 °C / 55 °C
Degree of protection (IP)	IP67
Ejection control	NO
Fork-/angular shaped	NO
Frame-shaped	NO
Heavy soiling	NO
Housing coating	Chromium-plated
Housing design	Cylinder, screw-thread
Housing material	Brass
Increased ambient temperatures >70°C	NO
Material of optical surface	Glass
Punching tools	NO
Reflector included in the scope of delivery	NO
Sensor length	60 mm
Strong vibration / motion	NO
Thread length	41 mm
Thread pitch	1 mm
Thread size, metric	12
With interchangeable lens	NO
Alarm output	NO
Analogue output -10 V ... +10 V	NO
Analogue output 0 V ... 10 V	NO
Analogue output 0 mA ... 20 mA	NO
Analogue output 4 mA ... 20 mA	NO
Decay time	0.5 ms
High repeat accuracy	NO

**TECHNICAL DATA**

Hysteresis	10 %
Interference suppression	NO
Max. output current	200 mA
Max. switching distance	300 mm
No-load current	15 mA
Number of pins	4
Number of semiconductor outputs with signaling function	1
Operating voltage (min/max)	10 V / 35 V
Polarizing filter	NO
Pre-failure message	NO
Rated control supply voltage $U_s$ at DC (min/max)	24 V / 24 V
Readiness delay	60 ms
Residual ripple	20 %
Response time	0.5 ms
Reverse polarity protection	YES
Scanning function	Light switching
Sensing range (min/max)	70 mm / 300 mm
Setting procedure	Manual adjustment
Short-circuit-proof	YES
Suitable for safety functions	NO
Switching frequency	1000 Hz
Type of electrical connection	Connector M12
Type of switching function	Normally open contact (NO)
Type of switching output	PNP
USB connection	NO
Voltage drop	2 V
Voltage type	DC
With LED display	YES
With communication interface, AS-Interface	NO
With communication interface, CANOpen	NO
With communication interface, DeviceNet	NO
With communication interface, Ethernet	NO
With communication interface, INTERBUS	NO
With communication interface, PROFIBUS	NO
With communication interface, RS-232	NO
With communication interface, RS-422	NO
With communication interface, RS-485	NO
With communication interface, SSD	NO
With communication interface, SSI	NO
With communication interface, analog	NO
With monitoring function of downstream devices	NO
With other analog output	NO
With restart lock	NO
With time function	NO
Background suppression	NO

**TECHNICAL DATA**

Color recognition	NO
Contrast differentiation	NO
Light beam form	Point
Light source	Polarity free red light
Luminescence detection	NO
Small light beam diameter	NO
Wavelength of the sensor	660 nm

**CONNECTION**


**Colors:** 1 = BN (brown), 2 = WH (white), 3 = BU (blue), 4 = BK (black)

**Functions:** 1 = L+, 2 = n. c., 3 = L-, 4 = PNP NO

**DIMENSIONAL DRAWING**
