

cable sockets / connectors (one side ready made)

ipf cable sockets are used primarily for establishing the electrical connection of sensors. Their features are characterized by rugged design, the highest protection classes (IP67 | IP68 | IP69K) and, if desired, with 360° shielding. With the features: bus-ready, suitable for use with drag chains and robots, resistance to oil and chemicals, resistance to welding sparks, their resistance to cleaning agents or high-pressure and steam-jet cleaning, the expanded temperature range of up to +230°C, the rapid interconnection technology and special data transmission properties, the cable sockets meet all requirements in automation technology.

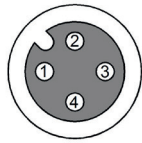
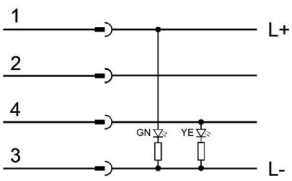

TECHNICAL DATA

Hygienic and wet area	NO
Oil and cooling lubricants	YES
Cable length	10 m
Degree of protection (IP)	IP67
Increased ambient temperature > 90°C	NO
Material of cable sheath	PUR (Polyurethane)
Number of wires	4
Perm. ambient temperature of cable, fixed cable (min/max)	-30 °C / 90 °C
Positioning of cable feed, field side	Angled
Positioning of cable feed, housing side	Straight
Seawater-resistant	NO
Suitable for trailing chain	YES
Wire assembly	IV000777
Wire cross section	0.34 mm ²
Line diameter	4.7 mm
Number of pins	4
Rated current I _n	4 A
Shielded	NO
Suitable for self-assembly	NO
Type of electrical connection, field side	M12
Type of electrical connection, housing side	Free conductor end
Type of plug-in contact, field side	Female (bus)
With LED display	YES
Acid and alkali-resistant	NO
Flame resistant	No
Free of LABS	NO
Halogen-free	NO
Hydrolysis-proof	NO
IR-networked	NO
Ozone and UV-resistant	NO
Recyclable	NO

TECHNICAL DATA

RoHs-compliant	NO
Robotics	NO
Silicone-free	NO
Suitable for trailing chain and torsion resistant	YES
Welding area	YES

CONNECTION



Colors: 1 = BN (brown), 2 = WH (white), 3 = BU (blue), 4 = BK (black)

Functions:

DIMENSIONAL DRAWING

